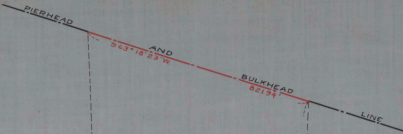


DELAWARE

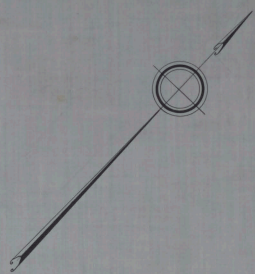
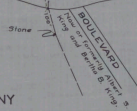
TACONY - PALMYRA

FERRY COMPANY

RIVER



1882, 88.
 Lease by State of New Jersey to Albert B. King and Bertha B. King May 21, 1923



NO. 222
 STATE OF NEW JERSEY
 BOARD OF COMMERCE AND NAVIGATION
 MAP SHOWING
 PIERHEAD LINE AND BULKHEAD LINE
 ON DELAWARE RIVER
 IN THE BOROUGH OF PALMYRA
 IN THE COUNTY OF BURLINGTON
 ADOPTED JULY 19 1926

S *John Macintosh*
 J *Richard Johnson*
 S *W. J. Anderson*
 A *William W. Wick*
Harris on Cost

CABINET A
 RIM NO. 31
 FOLDER NO.
 SHEET NO. 39

ATTEST:
Nictor Behrens
 DIRECTOR AND CHIEF ENGINEER