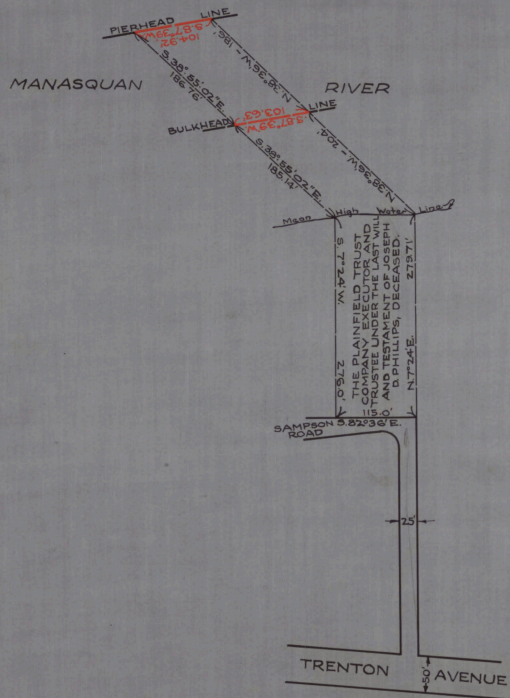
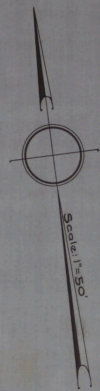


CABINET A
 A/RV NO. 31
 FOLDER NO. _____
 SHEET NO. 149



NO 350
 STATE OF NEW JERSEY
 BOARD OF COMMERCE AND NAVIGATION
 MAP SHOWING
 PIERHEAD LINE AND BULKHEAD LINE
 ON MANASQUAN RIVER
 IN THE BOROUGH OF POINT PLEASANT IN THE
 COUNTY OF OCEAN
 ESTABLISHED JUNE 13, 1931.

3 J. J. ...
K. ...
M. ...
A. ...

Attest.
Victor Belin
 DIRECTOR AND CHIEF ENGINEER