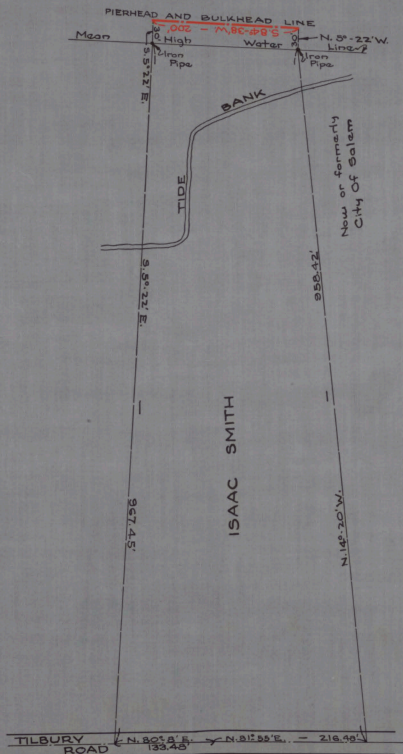


## SALEM RIVER CUTOFF



CABINET A

ARM NO. 31

FOLDER NO. 156

SHEET NO. 156

NO. 355  
STATE OF NEW JERSEY  
BOARD OF COMMERCE AND NAVIGATION  
MAP SHOWING  
PIERHEAD AND BULKHEAD LINE  
ON SALEM RIVER CUTOFF  
IN THE CITY OF SALEM IN THE  
COUNTY OF SALEM  
ESTABLISHED JUNE 15, 1931.

S. *Isaac Smith*  
X. *William T. Kirk*  
M. *John D. Miller*  
AS. *Augustus Smith*  
*George C. Smith*  
*John D. Miller*

Attest:

*Victor Beliveau*  
DIRECTOR AND CHIEF ENGINEER