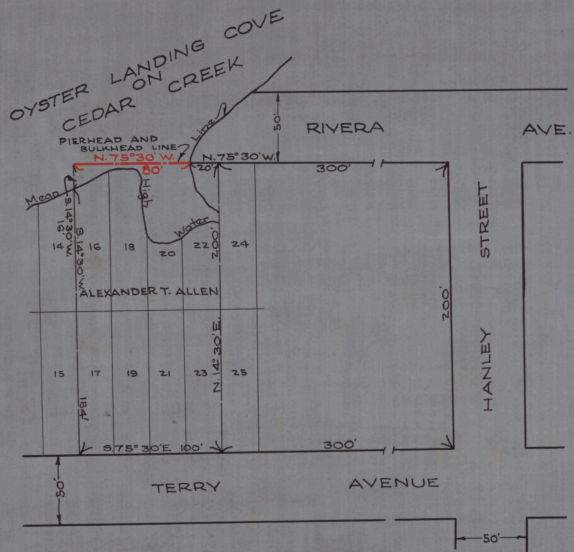
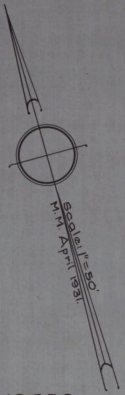


CABINET A
ATTN NO. 31
FOLDER NO.
SHEET NO. 155



NO. 356
STATE OF NEW JERSEY
BOARD OF COMMERCE AND NAVIGATION
MAP SHOWING
PIERHEAD AND BULKHEAD LINE
ON OYSTER LANDING COVE ON CEDAR CREEK
IN THE TOWNSHIP OF LACEY IN THE
COUNTY OF OCEAN
ESTABLISHED SEPTEMBER 21, 1931.

- S *Augustine Smith*
- K *William W. White*
- M *James Donato*
- D *Thomas Gray*
- C *Lawrence Foster*

Attest:

Victor Gelinas
DIRECTOR AND CHIEF ENGINEER