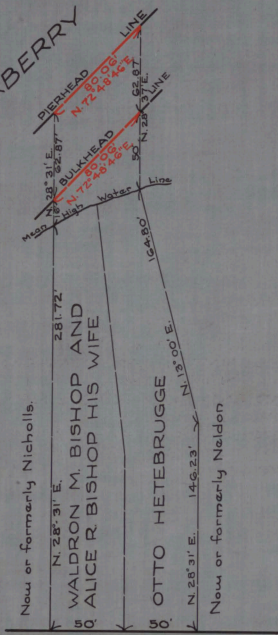
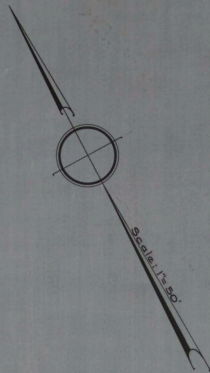


BLACKBERRY CREEK



MONMOUTH BOULEVARD



CABINET A

ARM NO. 31

FOLDER NO.

SHEET NO. 162

NO. 361
 STATE OF NEW JERSEY
 BOARD OF COMMERCE AND NAVIGATION
 MAP SHOWING
 PIERHEAD AND BULKHEAD LINES
 ON BLACKBERRY CREEK
 IN THE BOROUGH OF OCEANPORT IN THE
 COUNTY OF MONMOUTH
 ESTABLISHED JULY 20, 1931.

3 *J. Spencer Smith*
 K *William A. Clark*
 45 *Augustus Smith*
 M *John Hamilton*
Frank Doney
James Maxwell

Attest:

Nicholas Gelman
 DIRECTOR AND CHIEF ENGINEER