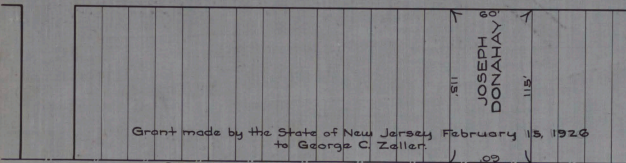


CABINET A
ARM NO. 31
FOLDER NO. _____
SHEET NO. 166

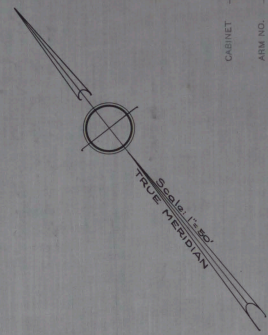
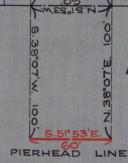
CATALINA AVENUE

SUNSET DRIVE SOUTH



JOSEPH & DONAHAY

BARNEGAT BAY



No. 365
STATE OF NEW JERSEY
BOARD OF COMMERCE AND NAVIGATION
MAP SHOWING
PIERHEAD LINE
ON BARNEGAT BAY
IN THE TOWNSHIP OF DOVER IN THE
COUNTY OF OCEAN
ESTABLISHED SEPTEMBER 21, 1931.

G. Augustus Smith
K
M
D
J

Attest:-

Victor Gelman
DIRECTOR AND CHIEF ENGINEER