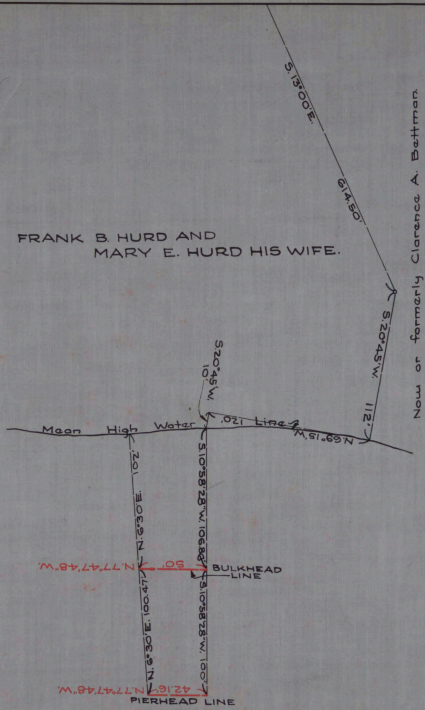
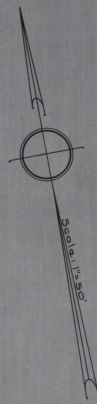


FRANK B. HURD AND
MARY E. HURD HIS WIFE.



Now of formerly Clarence A. Bettman

NAVESINK OR NORTH
SHREWSBURY RIVER



CABINET A
 APP. NO. 31
 FOLDER NO. _____
 SHEET NO. 167

No. 368
 STATE OF NEW JERSEY
 BOARD OF COMMERCE AND NAVIGATION
 MAP SHOWING
 PIERHEAD LINE AND BULKHEAD LINE
 ON NAVESINK OR NORTH SHREWSBURY RIVER
 IN THE TOWNSHIP OF MIDDLETOWN IN THE
 COUNTY OF MONMOUTH
 ESTABLISHED SEPTEMBER 21, 1931.

- S *Augusta Smith*
- K *William A. Smith*
- M *John J. Smith*
- D *John J. Smith*
- James J. Smith*

Attach-

Victor G. Linn
 DIRECTOR AND CHIEF ENGINEER