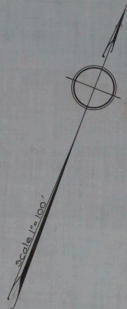
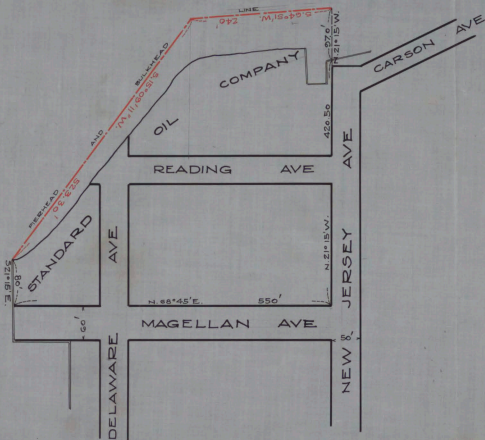


CLAM CREEK



No 236
 STATE OF NEW JERSEY
 BOARD OF COMMERCE AND NAVIGATION
 MAP SHOWING
 PIERHEAD AND BULKHEAD LINE
 ON CLAM CREEK
 IN THE CITY OF ATLANTIC CITY IN THE
 COUNTY OF ATLANTIC
 ADOPTED APRIL 25, 1927

15 _____
 14 _____
 13 _____
 12 _____
 11 _____
 10 _____
 9 _____
 8 _____
 7 _____
 6 _____
 5 _____
 4 _____
 3 _____
 2 _____
 1 _____

CABINET A
 ARM NO. 31
 FOLDER NO. _____
 SHEET NO. 53

ATTEST: *Victor Lelievre*
 DIRECTOR AND CHIEF ENGINEER