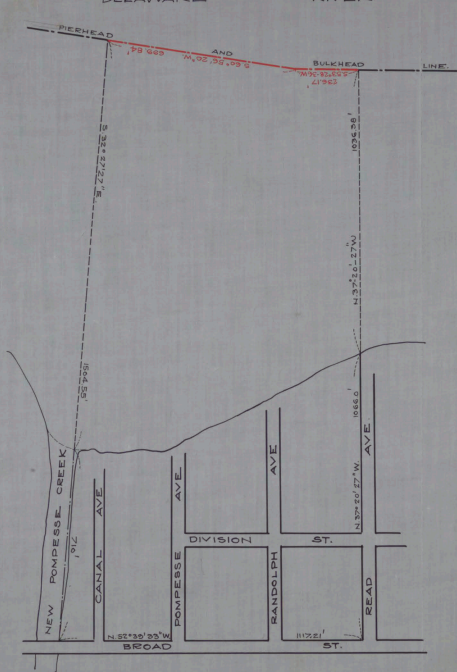


DELAWARE RIVER



No 244
 STATE OF NEW JERSEY
 BOARD OF COMMERCE AND NAVIGATION
 MAP SHOWING
 BULKHEAD AND BULKHEAD LINE
 ON DELAWARE RIVER
 IN THE TOWNSHIP OF CINNAMINSON IN
 THE COUNTY OF BURLINGTON
 ADOPTED JUNE 20, 1927

J. J. Lawrence Smith
Richard C. Dickinson
 WTC *William T. Clark*
 HCO *Wm. W. Beck's*
 ag *Augustus Smith*
 HC *Thaddeus Cook*

CABINET A
 ARM NO. 31
 FOLDER NO. _____
 SHEET NO. 59

Attest

Director and Chief Engineer