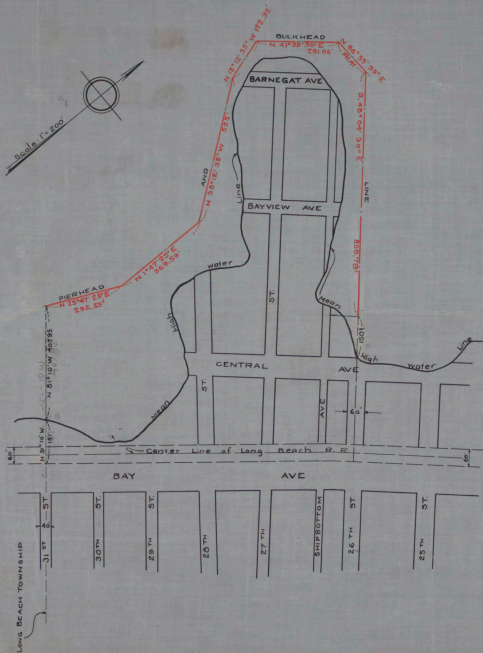


LITTLE EGG HARBOR BAY



NO. 254  
 STATE OF NEW JERSEY  
 BOARD OF COMMERCE AND NAVIGATION  
 MAP SHOWING  
 PIERHEAD AND BULKHEAD LINE  
 ON LITTLE EGG HARBOR BAY  
 IN THE BOROUGH OF SHIP BOTTOM-BEACH ARLINGTON  
 IN THE COUNTY OF OCEAN  
 ADOPTED OCTOBER 17 1927

*J. J. Speciale Smith*  
*Richard G. Thurman*  
*W. B. Jensen*  
*Augustus Smith*

CABINET   A    
 ARM NO.   31    
 FOLDER NO.         
 SHEET NO.   69  

Attest:

*Victor Galbreath*  
 Director and Chief Engineer