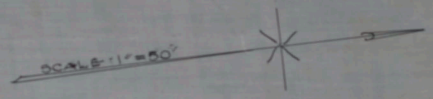
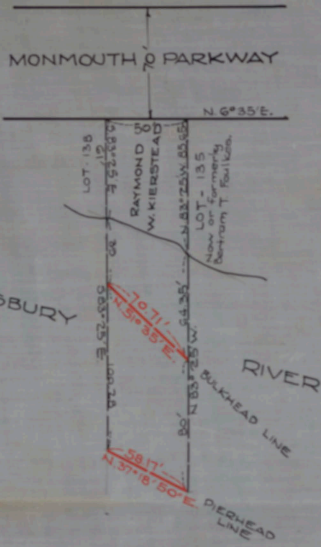


115-538



CABINET A

ARM NO. 31

FOLDER NO. \_\_\_\_\_

SHEET NO. 176

No. 375  
 STATE OF NEW JERSEY  
 BOARD OF COMMERCE AND NAVIGATION  
 MAP SHOWING  
 PIERHEAD LINE AND BULKHEAD LINE  
 ON SHREWSBURY RIVER  
 IN THE BOROUGH OF MONMOUTH BEACH IN THE  
 COUNTY OF MONMOUTH  
 ESTABLISHED OCTOBER 19, 1931.

*Spencer Smith*  
*John D. ...*  
*William V. ...*  
*Augustus Smith*  
*Tom Dony*

Attest:  
*Victor Pelineau*  
 DIRECTOR AND CHIEF ENGINEER.