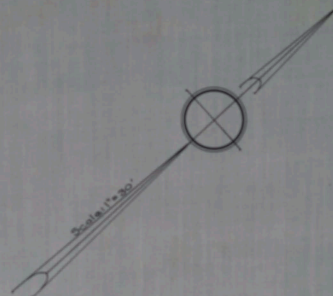
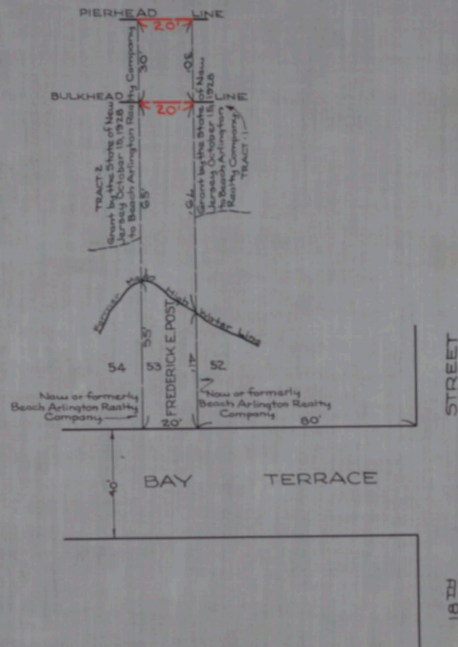


LITTLE EGG HARBOR BAY



NO. 393
 STATE OF NEW JERSEY
 BOARD OF COMMERCE AND NAVIGATION
 MAP SHOWING
 PIERHEAD LINE AND BULKHEAD LINE
 ON LITTLE EGG HARBOR BAY
 IN THE BOROUGH OF SHIP BOTTOM-BEACH ARLINGTON
 IN THE COUNTY OF OCEAN
 ESTABLISHED JANUARY 18, 1932.

JTS *James C. Smith*
 AG *Augustus Smith* CABINET A
 K *William H. Kirk*
 F *Forbes G. Feltus* ARM NO. 32
James C. Smith FOLDER NO. _____
John Simulard SHEET NO. 15

Attest-

Victor Beliveau
 DIRECTOR AND CHIEF ENGINEER