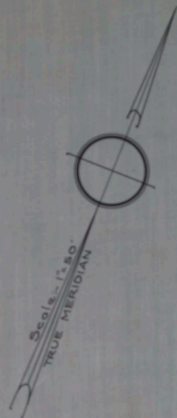
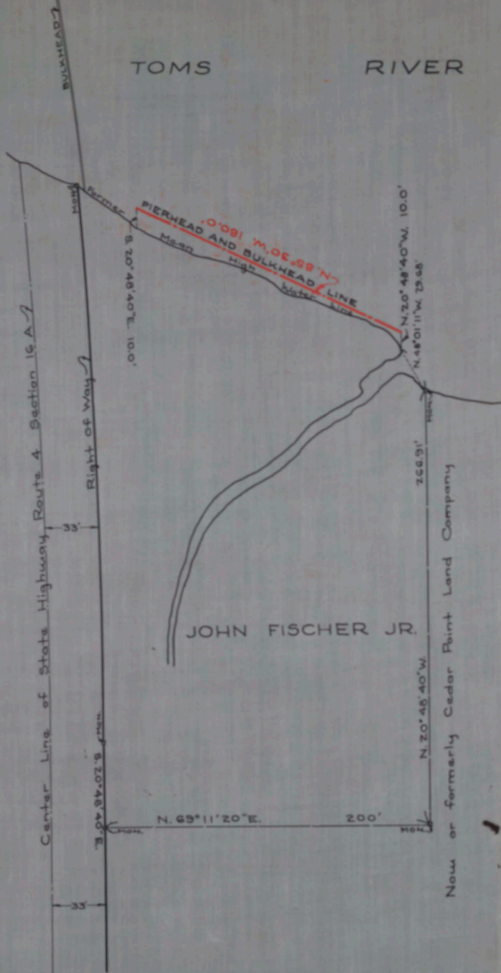


# TOMS RIVER



NO. 405  
 STATE OF NEW JERSEY  
 BOARD OF COMMERCE AND NAVIGATION  
 MAP SHOWING  
 PIERHEAD AND BULKHEAD LINE  
 ON TOMS RIVER  
 IN THE BOROUGH OF SOUTH TOMS RIVER IN THE  
 COUNTY OF OCEAN  
 ESTABLISHED JUNE 20, 1932.

- S. *J. Spencer Smith*
- T. *William W. Smith*
- M. *John W. Smith*
- F. *Brooker & Hunt*
- K. *James J. Kelly*
- J. *Alfred Jones*
- Wm. D. Dwyer*
- James C. Foster*

ATTEST-

*Victor Polineau*  
 Mayor and Chief Engineer

COMMET A

ARM NO. 32

HOLDER NO.