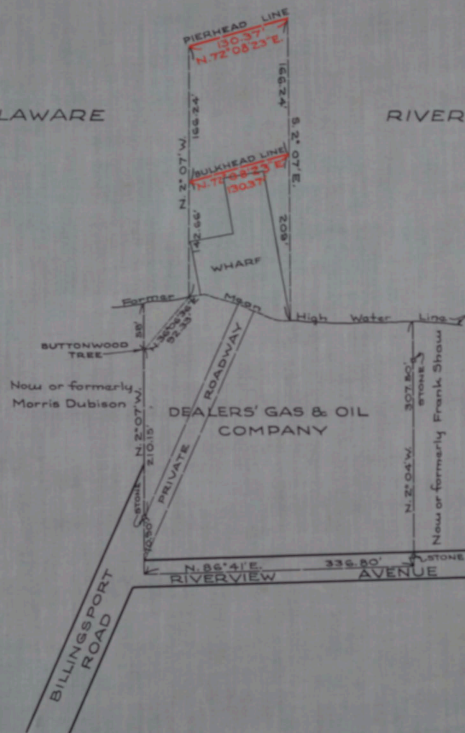


DELAWARE

RIVER



NO. 411
 STATE OF NEW JERSEY
 BOARD OF COMMERCE AND NAVIGATION
 MAP SHOWING
 PIERHEAD AND BULKHEAD LINES
 ON DELAWARE RIVER
 IN THE BOROUGH OF PAULSBORO IN THE
 COUNTY OF GLOUCESTER
 ESTABLISHED JULY 18, 1932.

S. Spencer Smith
E. John Davidson
C. James C. Carter
A. H. H. H.
K. James H. Kelly
W. H. H. H.
H. H. H. H.

CABINET AATTN NO. 32

FOLDER NO. _____

SHEET NO. 33

ATTEST-

Victor Salinas
 Director and Chief Engineer