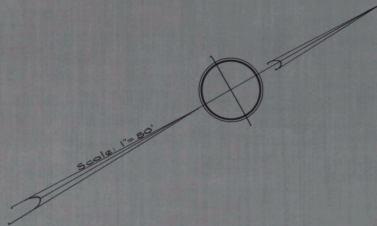
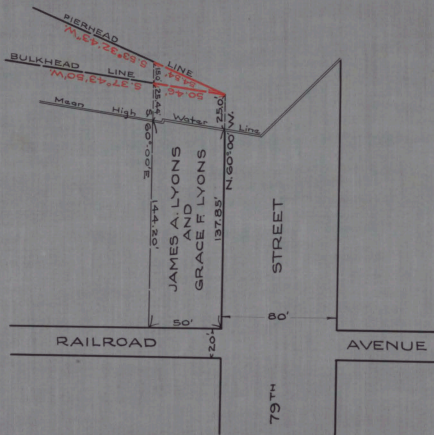


BARNEGAT BAY



NO. 414
 STATE OF NEW JERSEY
 BOARD OF COMMERCE AND NAVIGATION
 MAP SHOWING
 PIERHEAD AND BULKHEAD LINES
 ON BARNEGAT BAY
 IN THE BOROUGH OF HARVEY CEDARS IN THE
 COUNTY OF OCEAN
 ESTABLISHED JULY 18, 1932.

Alperice Smith
E. J. ...
...
...
...
...

CABINET A
 ARM NO. 32
 FOLDER NO. _____
 SHEET NO. 36

ATTEST-
Victor Beliveau
 Director and Chief Engineer