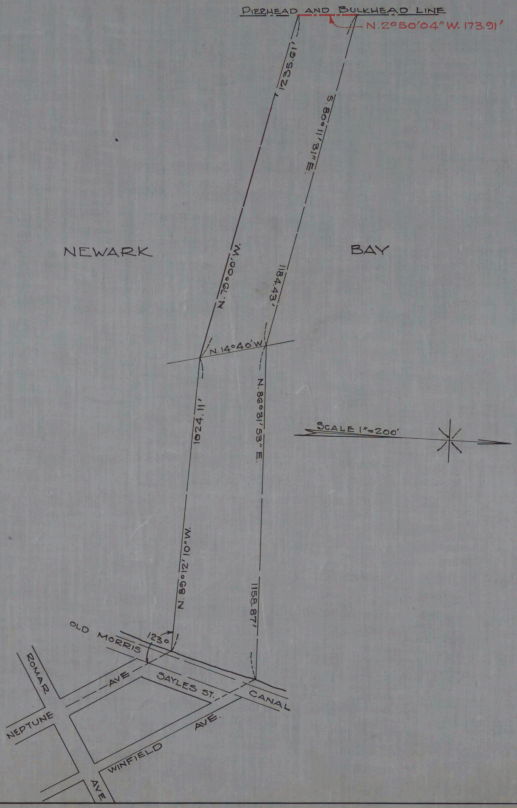


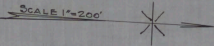
PIERHEAD AND BULKHEAD LINE

N. 2° 50' 04" W. 173.91'



NEWARK

BAY



NO. 452
 STATE OF NEW JERSEY
 BOARD OF COMMERCE AND NAVIGATION
 MAP SHOWING
 PIERHEAD AND BULKHEAD LINE
 ON NEWARK BAY
 IN THE CITY OF JERSEY CITY IN THE
 COUNTY OF HUDSON
 ESTABLISHED MAY 4, 1936

Spencer Smith
John D. ...
...
James H. ...
Charles ...
Wm. Doney

ATTEST-

Victor Behrman
 Director and Chief Engineer

A
 32
 69-1