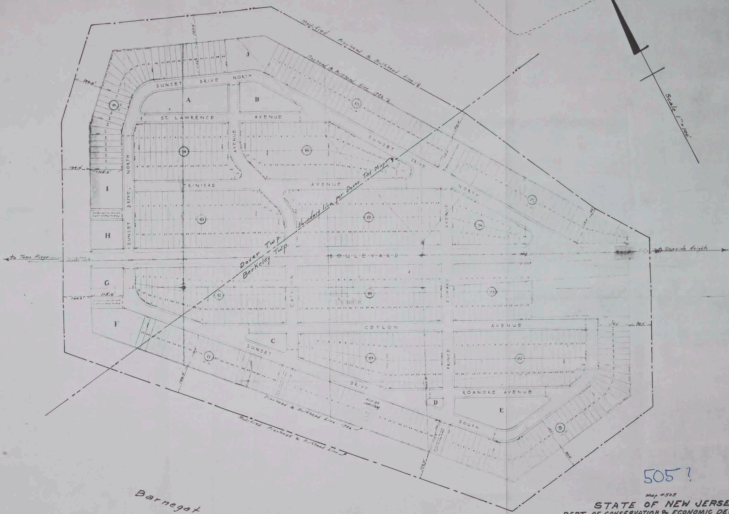


Barnegat Bay

Masah Island
Approximate location

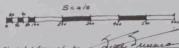


Barnegat Bay

505?

MAY 1932
STATE OF NEW JERSEY
DEPT. OF CONSERVATION & ECONOMIC DEVELOPMENT
BUREAU OF PLANNING & DEVELOPMENT

MAP SHOWING
MODIFIED PIERHEAD & BULKHEAD LINE ON BARNEGAT BAY
AROUND SUNSET ISLAND - TOWNSHIP OF DUNELLEY
& TOWNSHIP OF DOVER - COUNTY OF OCEAN
ADOPTED - MAY 12, 1932



Checked & Approved By: *[Signature]*
Computed & Drawn By: *[Signature]*

[Handwritten notes and signatures]

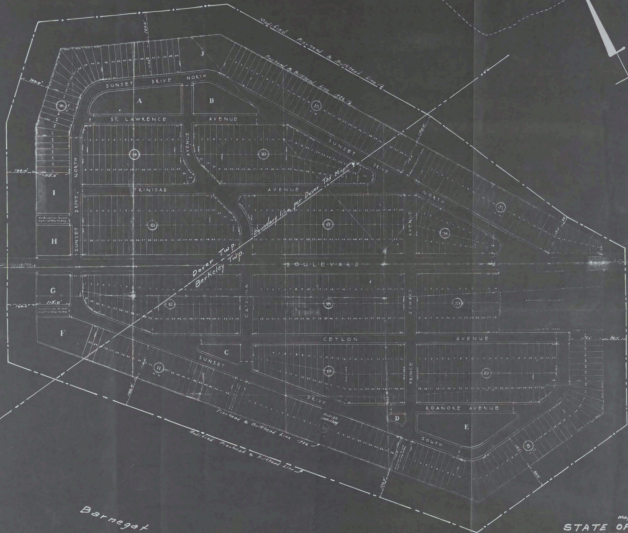
[Signature]
Chief Engineer Bureau

A-32-114

Barnegat Bay

Bay

Aspen Island
Barnegat Bay

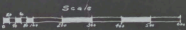


Barnegat Bay

Bay

STATE OF NEW JERSEY
 DEPT. OF CONSERVATION & ECONOMIC DEVELOPMENT
 DIVISION OF PLANNING & DEVELOPMENT

MAP SHOWING
 MODIFIED PIERHEAD & BULKHEAD LINE ON BARNEGAT BAY
 AROUND SUNSET ISLAND - TOWNSHIP OF BERKLEY
 & TOWNSHIP OF DOVER - COUNTY OF OCEAN
 ADOPTED - MAY 12, 1952



Checked & Approved by
 Computed & Drawn by

Members of the
 Planning Board
 Planning Board
 Planning Board
 Planning Board
 Planning Board
 Planning Board
 Planning Board
 Planning Board
 Planning Board
 Planning Board

A-32-114
 Chief Registrar