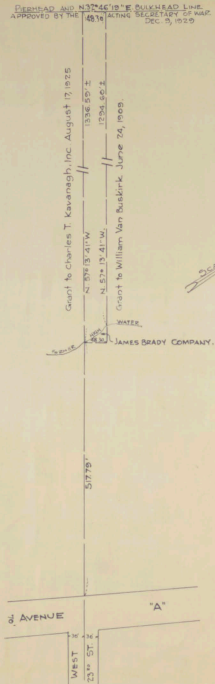


PIERHEAD AND BULKHEAD LINE
 APPROVED BY THE ACTING SECRETARY OF MAPS
 DEC. 3, 1929



NO 480
 STATE OF NEW JERSEY
 BOARD OF COMMERCE AND NAVIGATION
 MAP SHOWING
 PIERHEAD AND BULKHEAD LINE
 ON NEWARK BAY
 IN THE CITY OF BAYONNE
 COUNTY OF HUDSON
 ADOPTED MAY 2, 1940.

James Grady

ATTEST-

Richard Garrow
 ASSISTANT DIRECTOR