

415,000 FEET
39°58'00"

4,425,800 M

410,000 FEET
39°57'30"

4,422,800 M

39°57'00"

4,421,800 M

405,000 FEET

415,000 FEET
39°58'00"

4,425,800 M

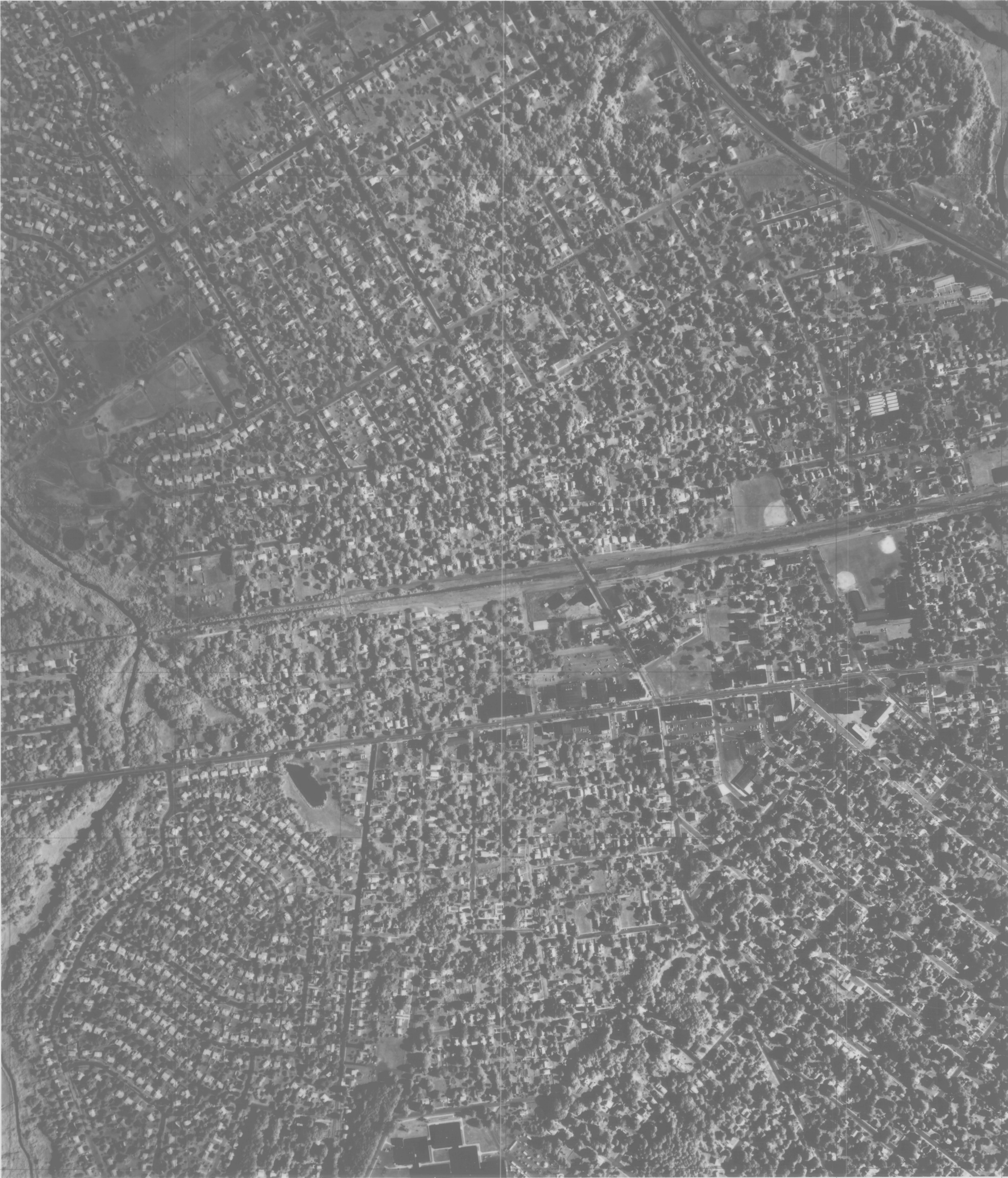
410,000 FEET
39°57'30"

4,422,800 M

39°57'00"

4,421,800 M

405,000 FEET



**SOUTH BRANCH WEST
CAMDEN**

SCALE 1:2400
0 100 200 300 400 500 600 700 800 FEET



**STATE OF NEW JERSEY
DEPARTMENT OF ENVIRONMENTAL PROTECTION**

406-1902

PHOTOMAP PREPARED FOR THE DEPARTMENT OF ENVIRONMENTAL PROTECTION
BY MARK HURD AERIAL SURVEYS, INC. FROM 1:8000 SCALE COLOR INFRARED
PHOTOGRAPHY TAKEN JULY 25, 1977.
THOSE PORTIONS OF THE BASE PHOTOMAP BELOW THE 10 FOOT ELEVATION
MEET NATIONAL MAP ACCURACY STANDARDS.

NEW JERSEY STATE PLANE COORDINATE GRID LINES SHOWN AT
1000 FOOT INTERVALS.
UTM GRID TICS, ZONE 18, SHOWN AT 200 METER INTERVALS.
LATITUDE AND LONGITUDE TICS SHOWN AT 30 SECOND INTERVALS.